

■  
FLEXIBLE GLASS DOORS



# PR-200

## flexible glass door with heavy duty rail

### PARKING SYSTEM



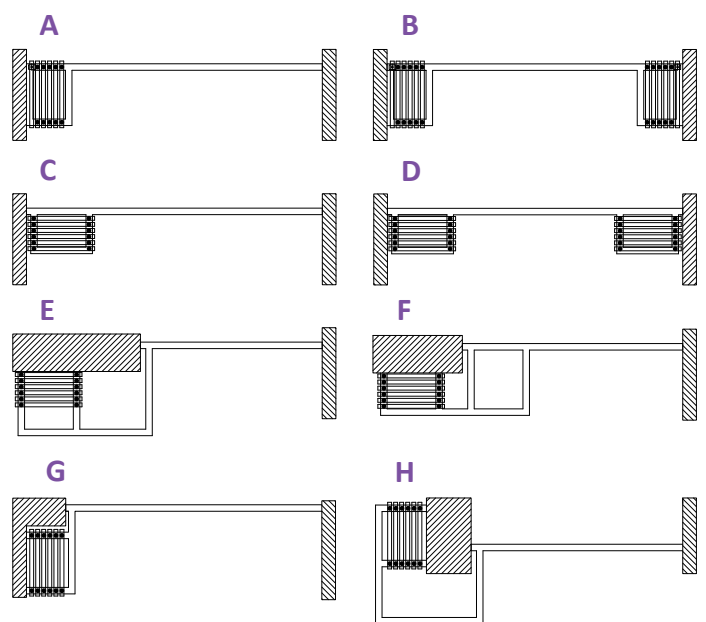
INAL® Frameless Movable Glass System, parking-type, with heavy duty certified aluminum rail 70 mm x 80 mm with **embedded stainless steel rod & certified stainless steel rollers**. Unlimited design possibilities for parking areas (vertical, diagonal or parallel parkings). Ability to create swing door panel with overhead concealed door closer in intermediate sections of openings (PR200/ SOC). Weather proofing along the entire length of the panel (PR-F200). Locking with Stainless steel front or side bolts or locking with double locking lock mechanism.

Available in Do It Yourself (DIY) or Made to measure upon request.

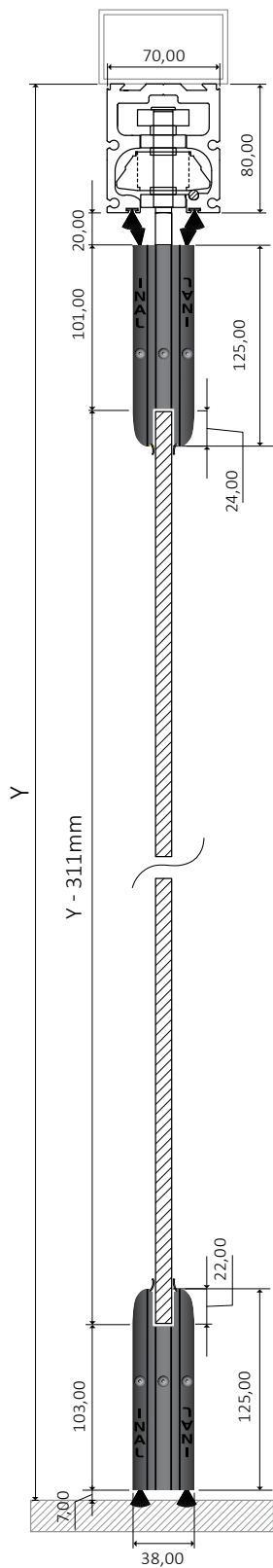
## technical specifications

|   |   |
|---|---|
| Glass Type                                      | Tempered or Laminated                                   |
| Glass thickness                                 | 10-12mm   |
| Panel weight                                    | max 120kg   |
| Maximum panel width                             | 1,00m   |
| Maximum opening height                          | 3,50m   |
| Type of PR-200 System                           | PR-F200 (Front Locking)<br>PR-S200 (Side Locking)       |
| Finishing                                       | Natural anodized, Satin anodized,<br>RAL powder coating |
| Without floor guide, No glass cuttings required |   |

### PANEL STORAGE/PARKING APPLICATIONS



MULTIPLE CHOICES DEPENDING ON YOUR NEEDS



Heavy duty aluminum rail 70x80 with embedded stainless steel rod  
**STRENGTH TEST:** 3.450kg (165/049.01-1 N.T.U.A.).



Stainless steel roller PR200 with clamp support.  
**STRENGTH TEST:** 4.600kg (165/049.01-2 N.T.U.A.).



**Parking Area**  
Big variety of parking areas for the storage of the panels



**PR200/SOC Panel**  
Swing- Sliding door panel with overhead concealed door closer in intermediate sections of openings (PR200/ SOC).



**NO FLOOR GUIDE REQUIRED**  
**NO GLASS CUTTINGS REQUIRED**

## locking options

### FRONT LOCKING



Lock Mechanism with Eurocylinder Key



Lock Mechanism with Half Cylinder and knob



Stainless Bolt

### SIDE LOCKING



Side Cap with Stainless Bolt



Female Side Cap PR-S200

#### GLASS (TEMPERED) DIMENSION CALCULATION

Glass height (mm) =  $Y - 311$ mm, (Y = from the bottom of the steel beam)

Opening width (mm) = O.W.      Number of panels (pcs) = P.N.

Glass width (mm) =  $\{O.W. - [(P.N. \times 3mm) + 25mm]\} / P.N.$

#### GLASS (LAMINATED) DIMENSION CALCULATION

Glass height (mm) =  $Y - 304$ mm, (Y = from the bottom of the steel beam)

Opening width (mm) = O.W.      Number of panels (pcs) = P.N.

Glass width (mm) =  $\{O.W. - [(P.N. \times 3mm) + 25mm]\} / P.N.$

# PR-200/R76

## flexible glass door with heavy duty rail

### PARKING SYSTEM



INAL® Frameless Movable Glass System, parking-type, with heavy duty certified aluminum rail 55mm x 76mm with **embedded stainless steel rod & certified stainless steel rollers**. PR-200/R76 System is the proposition for easily self guided storage of the flexible glass panels. Ability to create swing door panel with overhead concealed door closer in intermediate sections of openings (PR200/R76SOC). Weather proofing along the entire length of the panel. Locking with Stainless steel front or side bolts or locking with double locking lock mechanism.

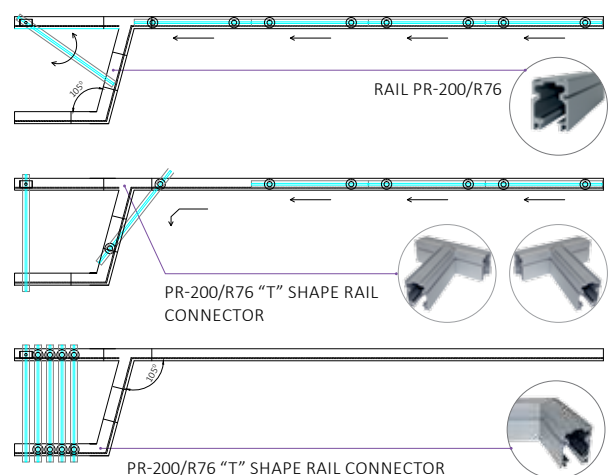
Available in Do It Yourself (DIY) or Made to measure upon request.

## technical specifications

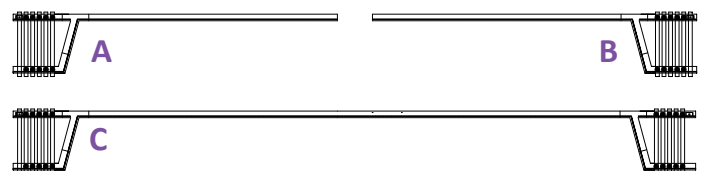
|   |   |
|---|---|
| Glass Type                                      | Tempered or Laminated                                     |
| Glass thickness                                 | 10-12mm   |
| Panel weight                                    | max 120kg   |
| Maximum panel width                             | 1,00m   |
| Maximum opening height                          | 3,50m   |
| Type of PR-200/R76 System                       | PR-F200/R76 (Front Locking)<br>PR-S200/R76 (Side Locking) |
| Finishing                                       | Natural anodized, Satin anodized,<br>RAL powder coating   |
| Without floor guide, No glass cuttings required |   |

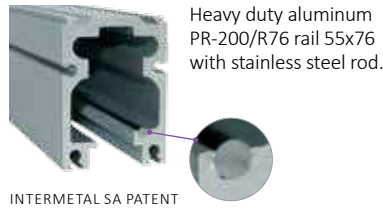
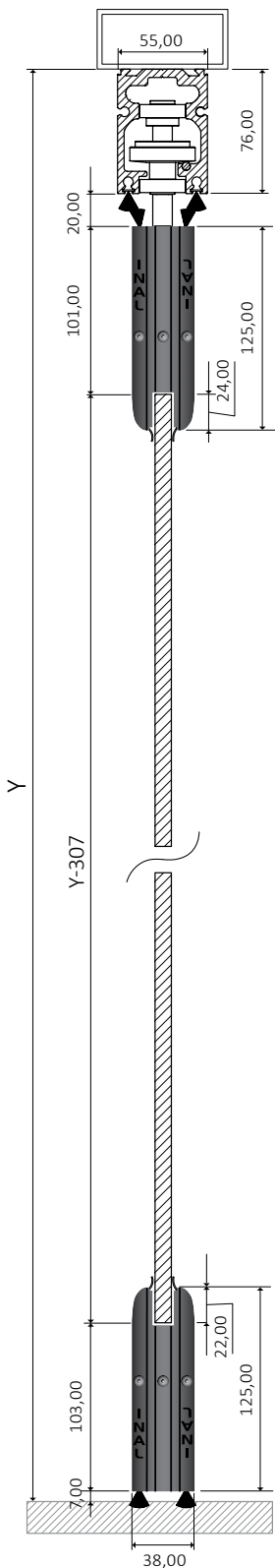
### PANEL STORAGE/PARKING AREA

EASILY SELF GUIDED STORAGE OF THE FLEXIBLE GLASS PANELS



### PARKING APPLICATIONS





Stainless steel roller for diversion movement, with clamp support.



Stainless steel roller for straight movement, with clamp support.



**Parking Area**  
Easily self guided storage of the flexible glass panels.



**PR200/R76SOC Panel**  
Swing- Sliding door panel with overhead concealed door closer in intermediate sections of openings (PR200/R76SOC).



**NO FLOOR GUIDE REQUIRED**  
**NO GLASS CUTTINGS REQUIRED**

## locking options

### FRONT LOCKING



Lock Mechanism with Eurocylinder Key



Lock Mechanism with Half Cylinder and knob



Stainless Bolt

### SIDE LOCKING



Side Cap with Stainless Bolt



Female Side Cap PR-S200

#### GLASS (TEMPERED) DIMENSION CALCULATION

Glass height (mm) =  $Y - 307\text{mm}$ , ( Y = from the bottom of the steel beam)

Opening width (mm) = O.W.      Number of panels (pcs) = P.N.

Glass width (mm) =  $\{O.W. - [(P.N. \times 3\text{mm}) + 25\text{mm}]\} / P.N.$

#### GLASS (LAMINATED) DIMENSION CALCULATION

Glass height (mm) =  $Y - 300\text{mm}$ , ( Y = from the bottom of the steel beam)

Opening width (mm) = O.W.      Number of panels (pcs) = P.N.

Glass width (mm) =  $\{O.W. - [(P.N. \times 3\text{mm}) + 25\text{mm}]\} / P.N.$

# PR-150

## flexible glass door with parking

### PARKING SYSTEM



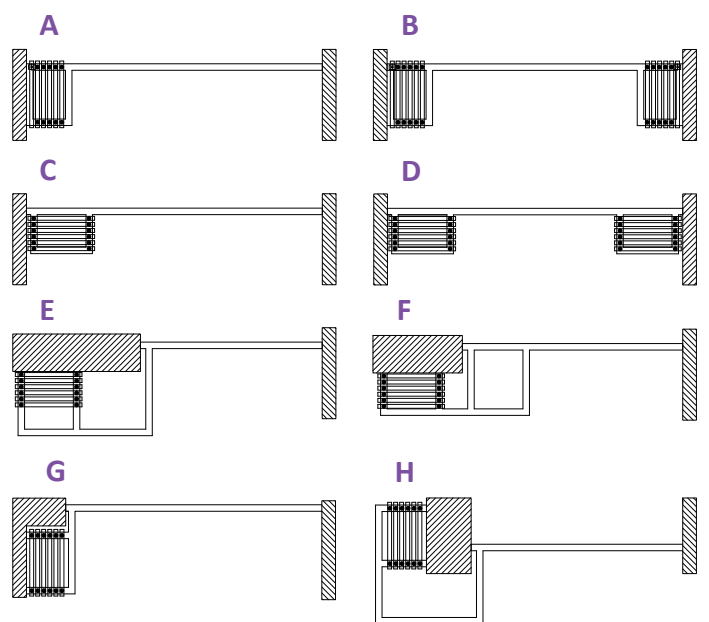
INAL® Frameless Movable Glass System, parking-type, with middle size aluminum rail, 52 mm x 59 mm with **embedded stainless steel rod & stainless steel rollers**. Unlimited design possibilities for parking areas (vertical, diagonal or parallel parkings). Ability to create swing door panel with overhead concealed door closer in intermediate sections of openings (PR150/ SOC). Weather proofing along the entire length of the panel (PR-F150). Locking with Stainless steel front or side bolts or locking with double locking lock mechanism.

Available in Do It Yourself (DIY) or Made to measure upon request.

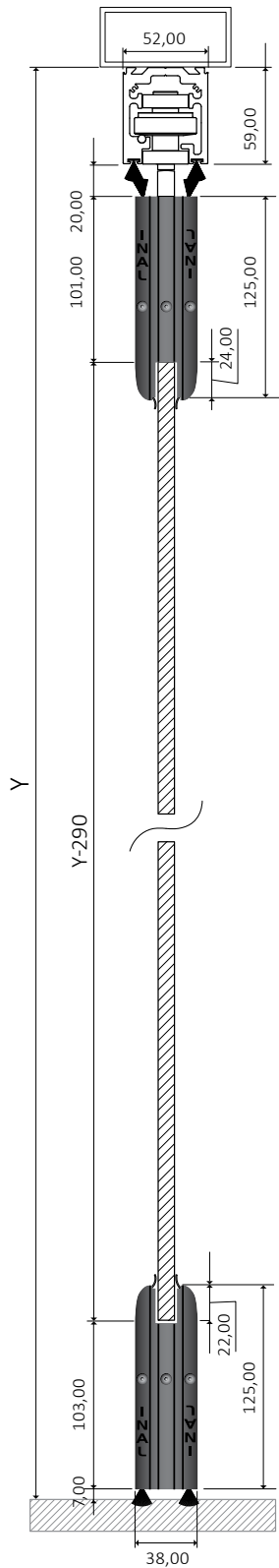
## technical specifications

|   |   |
|---|---|
| Glass Type                                      | Tempered or Laminated                                   |
| Glass thickness                                 | 10mm  |
| Panel weight                                    | max 85kg  |
| Maximum panel width                             | 1,00m   |
| Maximum opening height                          | 2,80m   |
| Type of PR-150 System                           | PR-F150 (Front Locking)<br>PR-S150 (Side Locking)       |
| Finishing                                       | Natural anodized, Satin anodized,<br>RAL powder coating |
| Without floor guide, No glass cuttings required |   |

### PANEL STORAGE/PARKING APPLICATIONS



MULTIPLE CHOICES DEPENDING ON YOUR NEEDS



Swing door with floor spring upon request.



Polycarbonate or PVC weather proofing profiles between the glass, in the whole panel length.



**NO FLOOR GUIDE  
REQUIRED**  
**NO GLASS CUTTINGS  
REQUIRED**

## locking options

### FRONT LOCKING



Lock Mechanism  
with Eurocylinder  
Key



Lock Mechanism with  
Half Cylinder and knob



Stainless Bolt

### SIDE LOCKING



Side Cap with  
Stainless Bolt



Female Side  
Cap PR-S200

#### GLASS (TEMPERED) DIMENSION CALCULATION

Glass height (mm) =  $Y - 290$ mm, ( Y = from the bottom of the steel beam)

Opening width (mm) = O.W.      Number of panels (pcs) = P.N.

Glass width (mm) =  $\{O.W. - [(P.N. \times 3mm) + 25mm]\} / P.N.$

#### GLASS (LAMINATED) DIMENSION CALCULATION

Glass height (mm) =  $Y - 283$ mm, ( Y = from the bottom of the steel beam)

Opening width (mm) = O.W.      Number of panels (pcs) = P.N.

Glass width (mm) =  $\{O.W. - [(P.N. \times 3mm) + 25mm]\} / P.N.$

# PR-125

## flexible glass door with parking

### PARKING SYSTEM

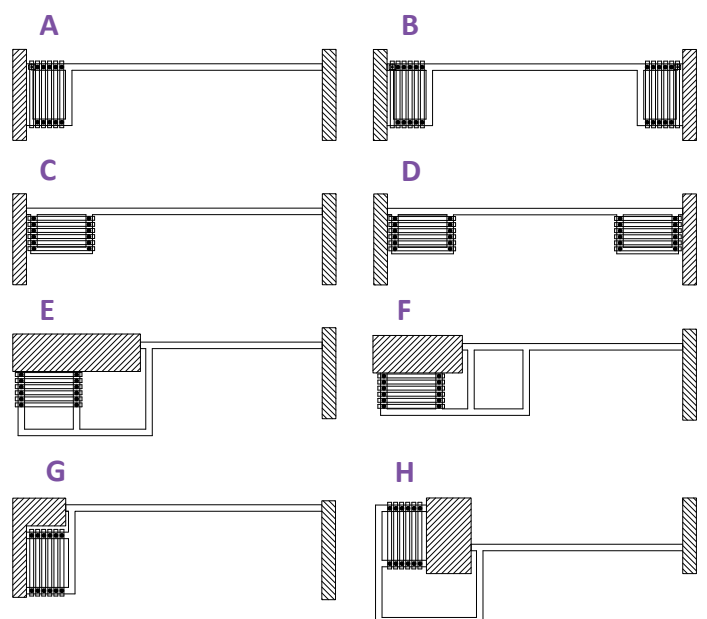


INAL® Frameless Movable Glass System, parking-type, with upper 70 mm and lower 125 mm aluminum profile. Aluminum middle size rail, 52 mm x 59 mm with **embedded stainless steel rod & stainless steel rollers**. Unlimited design possibilities for parking areas (vertical, diagonal or parallel parkings). Ability to create swing door panel with overhead concealed door closer in intermediate sections of openings (PR150/ SOC). Weather proofing along the entire length of the panel (PR-F125). Locking with Stainless steel front or side bolts or locking with double locking lock mechanism. Available in Do It Yourself (DIY) or Made to measure upon request.

## technical specifications

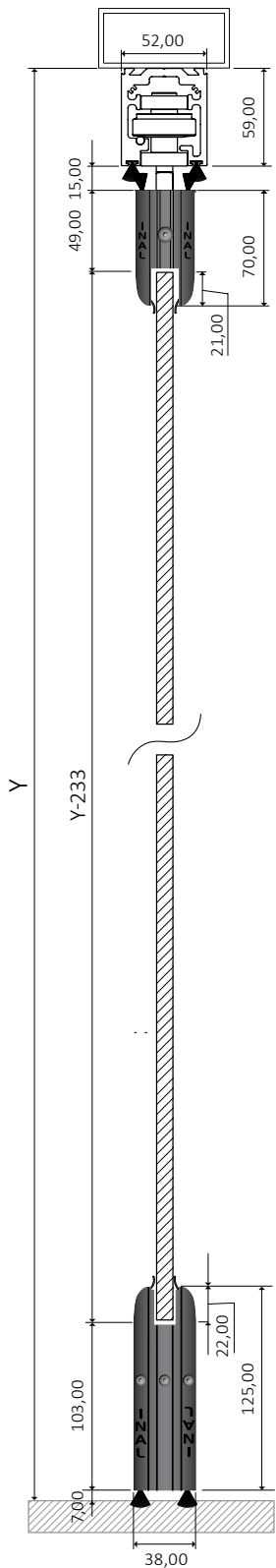
|   |   |
|---|---|
| Glass Type                                      | Tempered or Laminated                                   |
| Glass thickness                                 | 10mm  |
| Panel weight                                    | max 80kg  |
| Maximum panel width                             | 0,95m   |
| Maximum opening height                          | 2,80m   |
| Type of PR-125 System                           | PR-F125 (Front Locking)<br>PR-S125 (Side Locking)       |
| Finishing                                       | Natural anodized, Satin anodized,<br>RAL powder coating |
| Without floor guide, No glass cuttings required |   |

### PANEL STORAGE/PARKING APPLICATIONS



MULTIPLE CHOICES DEPENDING ON  
YOUR NEEDS





Weather proofing brush between top rail and top profile & between bottom profile and the floor.



Top profile 70mm, bottom profile 125mm



Ability to join two openings in 90° degrees angle, without a vertical column.



NO FLOOR GUIDE  
REQUIRED  
NO GLASS CUTTINGS  
REQUIRED

## locking options

### FRONT LOCKING



Lock Mechanism  
with Eurocylinder  
Key



Lock Mechanism with  
Half Cylinder and knob



Stainless Bolt

### SIDE LOCKING



Side Cap with  
Stainless Bolt



Female Side  
Cap PR-S200

### GLASS (TEMPERED OR LAMINATED) DIMENSION CALCULATION

Glass height (mm) =  $Y - 233\text{mm}$ , ( Y = from the bottom of the steel beam)

Opening width (mm) = O.W.      Number of panels (pcs) = P.N.

Glass width (mm) =  $\{O.W. - [(P.N. \times 3\text{mm}) + 25\text{mm}]\} / P.N.$

# PR86/R76

## flexible glass door with parking

### PARKING SYSTEM



INAL® Frameless Movable Glass System, parking-type, with heavy duty certified aluminum rail 55mm x 76mm with **embedded stainless steel rod & certified stainless steel rollers**. Weather proofing along the entire length of the panel.

A minimal solution for a movable facade for café, restaurants, shops, hotels e.t.c., with easily self guided storage of the flexible glass panels. Locking with Stainless steel front or side bolts or locking with double locking lock mechanism.

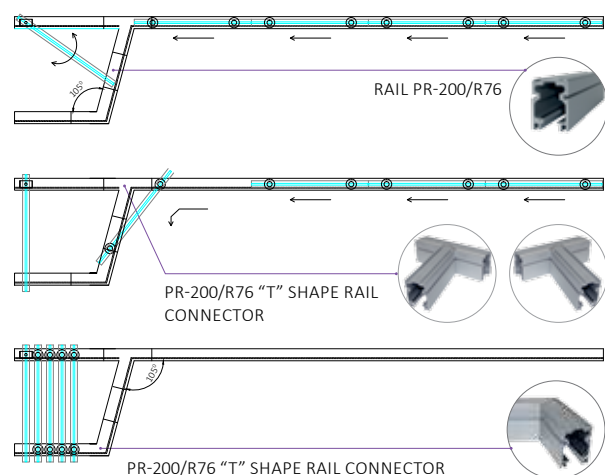
Available in Do It Yourself (DIY) or Made to measure upon request.

## technical specifications

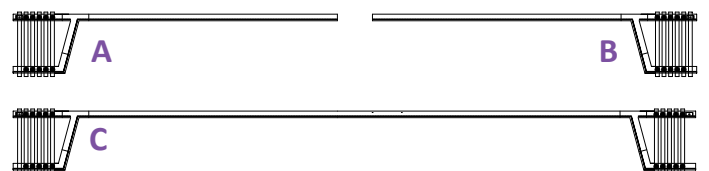
|   |  |
|---|--|
| Glass Type                                      | Tempered   |
| Glass thickness                                 | 10mm   |
| Panel weight                                    | max 90kg   |
| Maximum panel width                             | 1,00m  |
| Maximum opening height                          | 3,00m  |
| Type of PR86/R76 System                         | PRS86/R76 (Side Locking)                             |
| Finishing                                       | Natural anodized, Satin anodized, Ral powder coating |
| Without floor guide, No glass cuttings required |  |

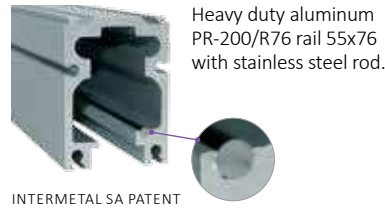
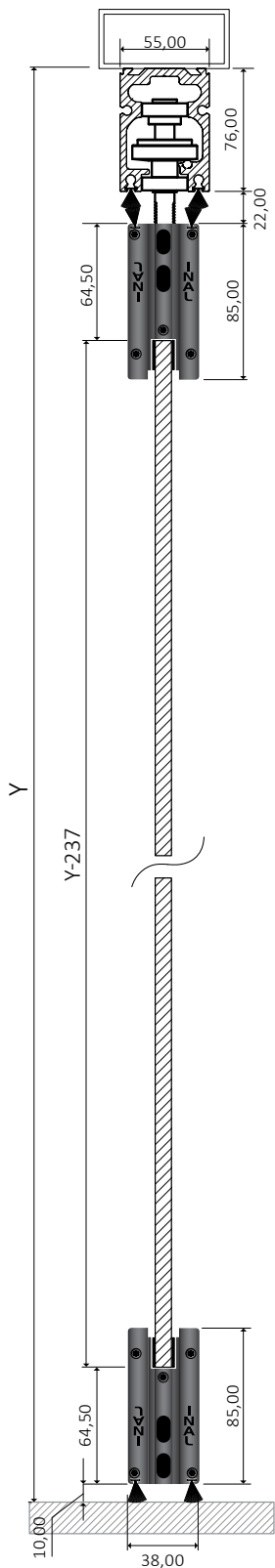
### PANEL STORAGE/PARKING AREA

EASILY SELF GUIDED STORAGE OF THE FLEXIBLE GLASS PANELS



### PARKING APPLICATIONS





NO GLASS CUTTINGS REQUIRED

## locking options

### FRONT LOCKING



### SIDE LOCKING



#### GLASS (TEMPERED) DIMENSION CALCULATION

Glass height (mm) =  $Y - 237\text{mm}$ , (Y = from the bottom of the steel beam)

Opening width (mm) = O.W.      Number of panels (pcs) = P.N.

Glass width (mm) =  $\{O.W. - [(P.N. \times 4\text{mm}) + 27\text{mm}]\} / P.N.$

# PR86/R60

## flexible glass door with parking

### PARKING SYSTEM



INAL® Frameless Movable Glass System, parking-type, with middle size aluminum rail, 52mm x 59mm with **embedded stainless steel rod & certified stainless steel rollers**.

Unlimited design possibilities for parking areas (vertical, diagonal or parallel parkings) according to customer's requests and needs. Weather proofing along the entire length of the panel.

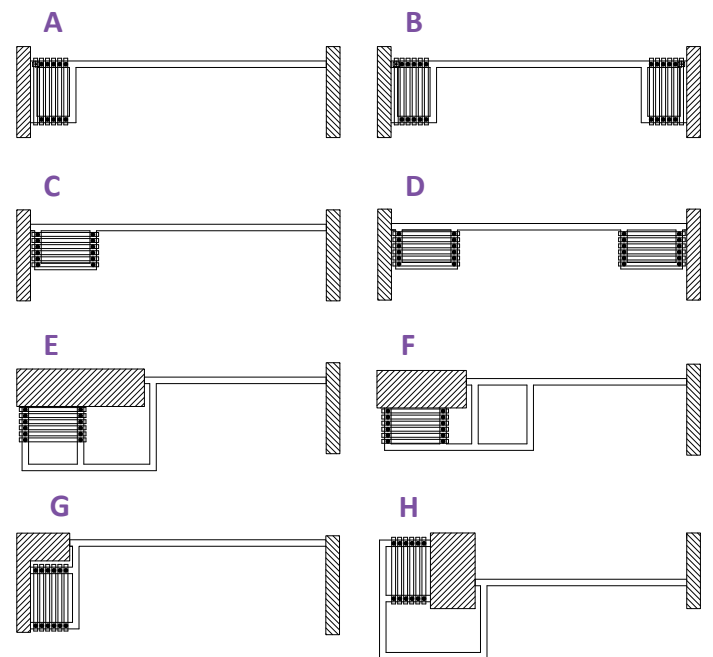
A minimal solution for a movable facade for café, restaurants, shops, hotels e.t.c. Locking with Stainless steel front or side bolts or locking in a wide range, also locking with double locking lock mechanism.

Available in Do It Yourself (DIY) or Made to measure upon request.

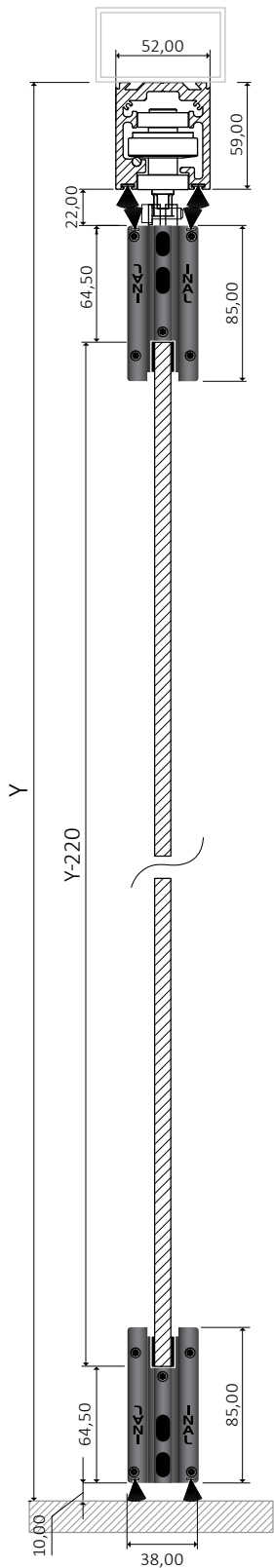
## technical specifications

|   |  |
|---|--|
| Glass Type                                      | Tempered or Laminated                                |
| Glass thickness                                 | 10mm   |
| Panel weight                                    | max 90kg   |
| Maximum panel width                             | 1,00m  |
| Maximum opening height                          | 3,00m  |
| Type of PR86/R60 System                         | PRS86/R60 (Side Locking)                             |
| Finishing                                       | Natural anodized, Satin anodized, RAL powder coating |
| Without floor guide, No glass cuttings required |  |

### PANEL STORAGE/PARKING APPLICATIONS



MULTIPLE CHOICES DEPENDING ON YOUR NEEDS



Stainless steel roller for diversion movement, with frame support.

Stainless steel roller for straight movement, with frame support.



Minimal solution ideal for restaurants, café, hotels etc.



Available in Do It Yourself (DIY) kit boxes.



**NO FLOOR GUIDE  
REQUIRED**  
**NO GLASS CUTTINGS  
REQUIRED**

## locking options

### FRONT LOCKING



Lock Mechanism with Eurocylinder Key 54mm



Lock Mechanism with Half Cylinder with knob



Stainless steel Bolt

### SIDE LOCKING



Side Cap with Stainless Bolt PR-86 Steel



Female Side Cap PR-86

### GLASS (TEMPERED) DIMENSION CALCULATION

Glass height (mm) =  $Y - 220\text{mm}$ , (Y = from the bottom of the steel beam)

Opening width (mm) = O.W.      Number of panels (pcs) = P.N.

Glass width (mm) =  $\{O.W. - [(P.N. \times 4\text{mm}) + 27\text{mm}]\} / P.N.$

# FRP-75

## movable glass door with frame & parking

### PARKING SYSTEM

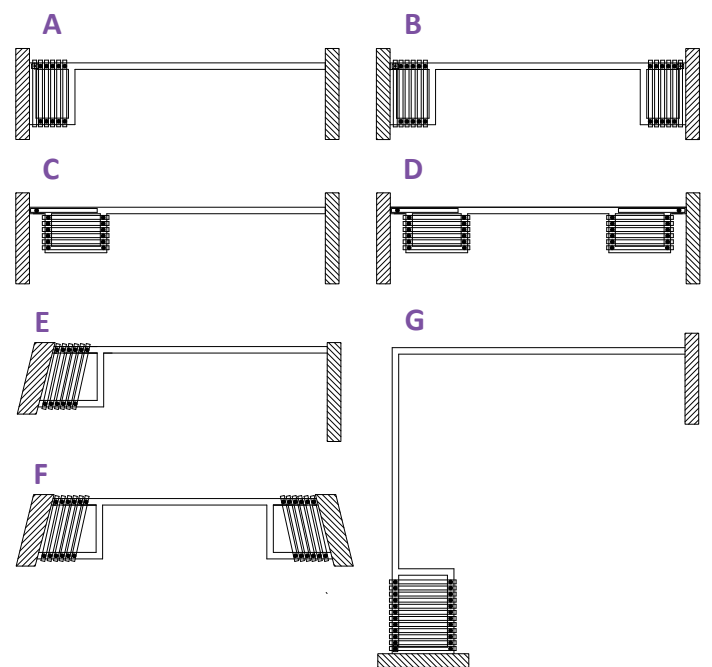


INAL® Framed Parking System FRP-75 with heavy duty certified aluminum rail 70 mm x 80 mm with **embedded stainless steel rod & certified stainless steel rollers**. Special designed aluminum profiles create a strong frame for a variety of glass such as tempered up to 12mm, laminated up to 6+6, double glazing with a total thickness of up to 18mm. High resistance female & male vertical profiles for the maximum weather proofing between framed panels in combination with adjustable side aluminum case profiles. Ability to create swing door panel with overhead concealed door closer in intermediate sections of openings (FRP75/SOC). Locking with eurocylinder or front bolts.

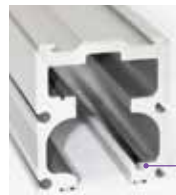
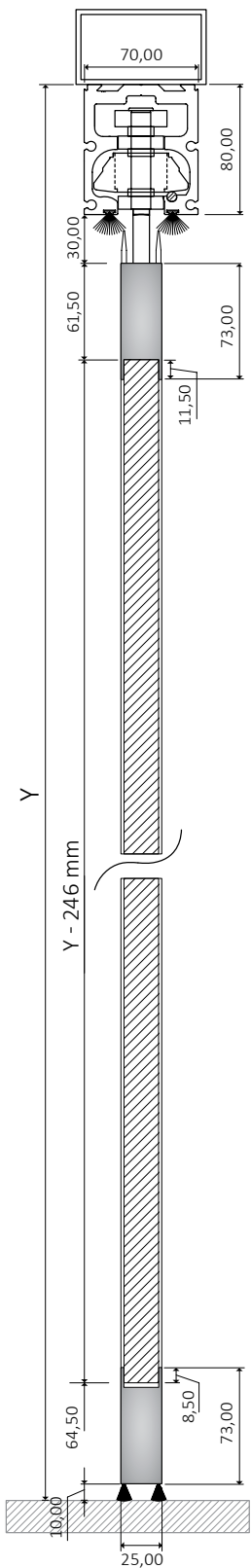
## technical specifications

|   |   |
|---|---|
| Glass Type                                      | Double glazing<br>Tempered or Laminated                 |
| Glass thickness                                 | max 18mm  |
| Panel weight                                    | max 100kg   |
| Maximum panel width                             | 1,00m   |
| Maximum opening height                          | 3,00m   |
| Type of FRP-75 System                           | Front Locking   |
| Finishing                                       | Natural anodized, Satin anodized,<br>RAL powder coating |
| Without floor guide, No glass cuttings required |   |

### PANEL STORAGE/PARKING APPLICATIONS

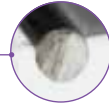


MULTIPLE CHOICES DEPENDING ON YOUR NEEDS



INTERMETAL SA PATENT

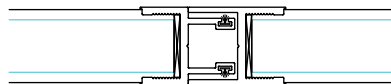
Heavy duty aluminum rail 70x80 with embedded stainless steel rod  
**STRENGTH TEST:** 3.450kg (165/049.01-1 N.T.U.A.).



Stainless steel roller PR200 with frame support.  
**STRENGTH TEST:** 4.600kg (165/049.01-2 N.T.U.A.).



High resistance female & male vertical profiles for the maximum weather proofing between framed panels.



Stainless steel handle to the swing panel. upon request.



**NO FLOOR GUIDE REQUIRED**  
**NO GLASS CUTTINGS REQUIRED**

## locking options

### FRONT LOCKING



Lock mechanism with eurocylinder



Internal locking bolt.



With additional lock to the vertical profile.

**GLASS (TEMPERED OR LAMINATED OR DOUBLE GLAZING) DIMENSION CALCULATION**

Glass height (mm) = **Y - 246mm**, ( Y = from the bottom of the steel beam)

# FRP-75/R76

## movable glass door with frame & parking

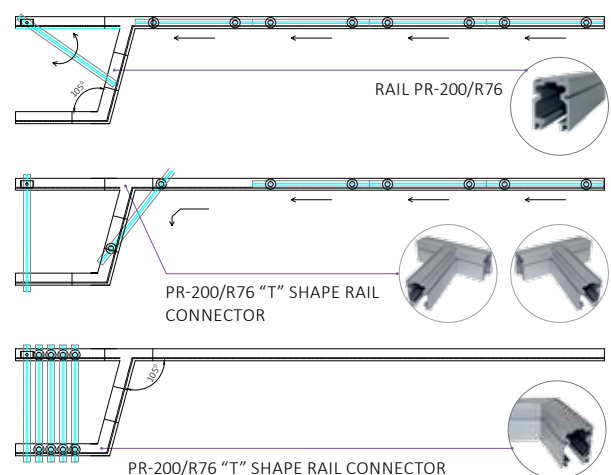
### PARKING SYSTEM



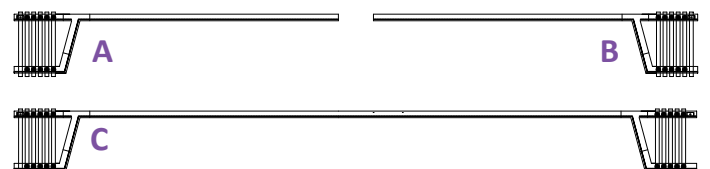
INAL® Framed Parking System FRP-75/R76 with heavy duty certified aluminum rail 55 mm x 76 mm with **embedded stainless steel rod & certified stainless steel rollers**. Special designed aluminum profiles create a strong frame for a variety of glass such as tempered up to 12mm, laminated up to 6+6, double glazing with a total thickness of up to 18mm. High resistance female & male vertical profiles for the maximum weather proofing between framed panels in combination with adjustable side aluminum case profiles. Ability to create swing door panel with overhead concealed door closer in intermediate sections of openings (FRP75/R76 SOC). Locking with eurocylinder or front bolts.

## technical specifications

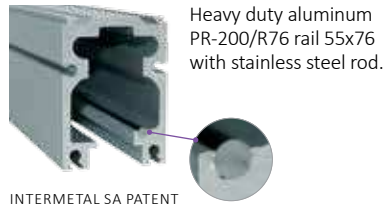
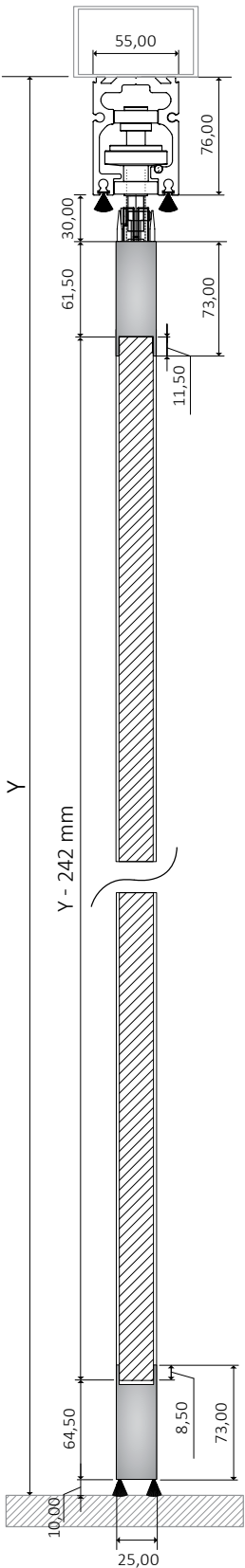
|   |   |
|---|---|
| Glass Type                                      | Double glazing<br>Tempered or Laminated                 |
| Glass thickness                                 | max 18mm  |
| Panel weight                                    | max 100kg   |
| Maximum panel width                             | 1,00m   |
| Maximum opening height                          | 3,00m   |
| Type of FRP-75/R76 System                       | Front Locking   |
| Finishing                                       | Natural anodized, Satin anodized,<br>RAL powder coating |
| Without floor guide, No glass cuttings required |   |



## PARKING APPLICATIONS





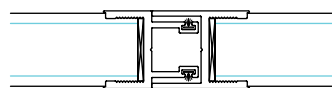


Stainless steel roller for diversion movement, with frame support.

Stainless steel roller for straight movement, with frame support.



High resistance female & male vertical profiles for the maximum weather proofing between framed panels.



Handle to the swing panel, upon request.



NO FLOOR GUIDE REQUIRED

NO GLASS CUTTINGS REQUIRED

## locking options

### FRONT LOCKING



Lock mechanism with eurocylinder



Internal locking bolt.



With additional lock to the vertical profile.

GLASS (TEMPERED OR LAMINATED OR DOUBLE GLAZING) DIMENSION CALCULATION

Glass height (mm) =  $Y - 242$ mm, (Y = from the bottom of the steel beam)

# FRP-75/R60

## movable glass door with frame & parking

### PARKING SYSTEM

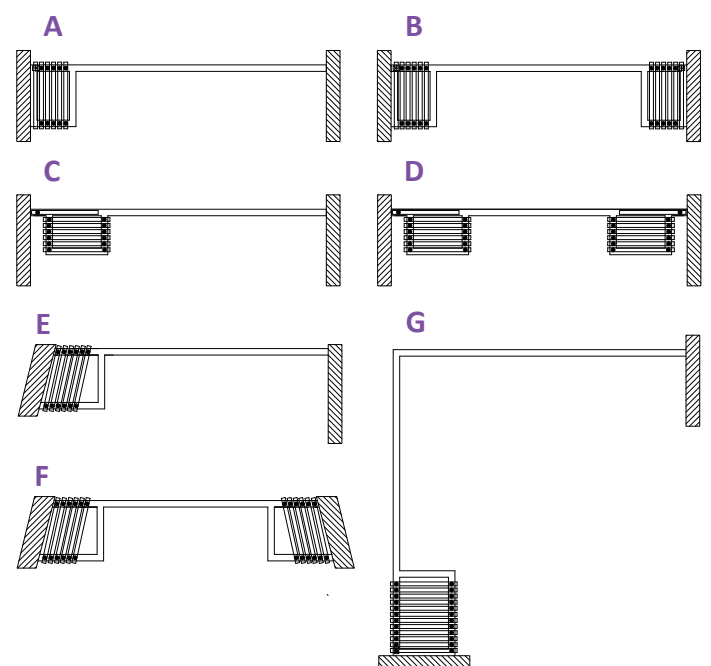


INAL® Framed Parking System FRP-75/R60 with middle size aluminum rail, 52 mm x 59 mm with **embedded stainless steel rod & stainless steel rollers**. Special designed aluminum profiles create a strong frame for a variety of glass such as tempered up to 12mm, laminated up to 6+6, double glazing with a total thickness of up to 18mm. High resistance female & male vertical profiles for the maximum weather proofing between framed panels in combination with adjustable side aluminum case profiles. Ability to create swing door panel with overhead concealed door closer in intermediate sections of openings (FRP75/R60 SOC). Locking with eurocylinder or front bolts.

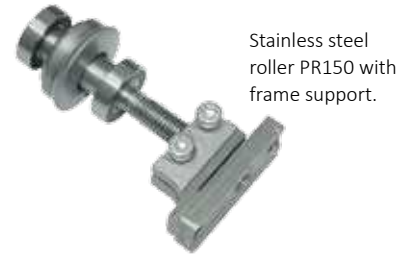
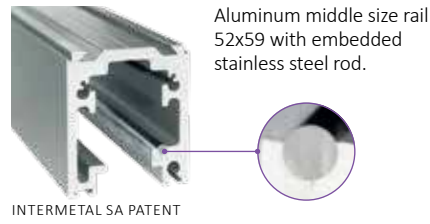
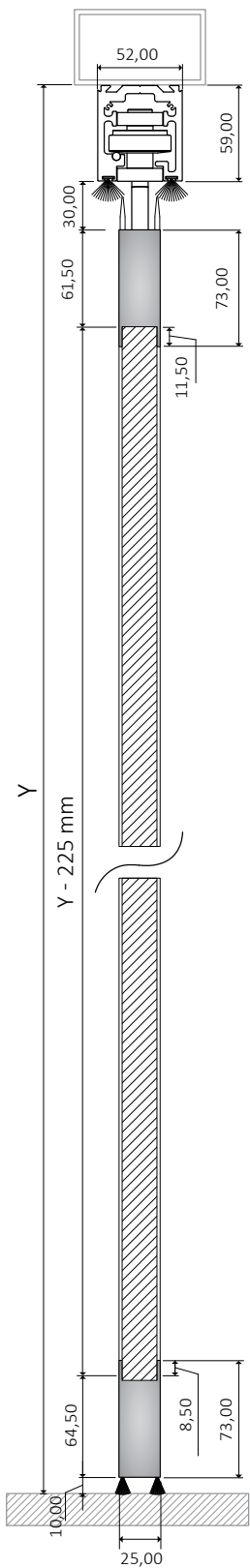
## technical specifications

|   |   |
|---|---|
| Glass Type                                      | Double glazing<br>Tempered or Laminated                 |
| Glass thickness                                 | max 18mm  |
| Panel weight                                    | max 75kg  |
| Maximum panel width                             | 0,90m   |
| Maximum opening height                          | 2,80m   |
| Type of FRP-75/R60 System                       | Front Locking   |
| Finishing                                       | Natural anodized, Satin anodized,<br>RAL powder coating |
| Without floor guide, No glass cuttings required |   |

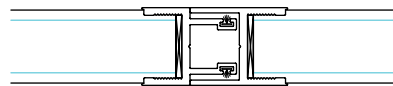
### PANEL STORAGE/PARKING APPLICATIONS



MULTIPLE CHOICES DEPENDING ON YOUR NEEDS



High resistance female & male vertical profiles for the maximum weather proofing between framed panels.



NO FLOOR GUIDE REQUIRED

NO GLASS CUTTINGS REQUIRED

## locking options

### FRONT LOCKING



Lock mechanism with eurocylinder



Internal locking bolt.



With additional lock to the vertical profile.

**GLASS (TEMPERED OR LAMINATED OR DOUBLE GLAZING) DIMENSION CALCULATION**

Glass height (mm) =  $Y - 225\text{mm}$ , (Y = from the bottom of the steel beam)

# FN-200

## folding glass door with heavy duty rail

### FOLDING SYSTEM



INAL® Frameless Folding door System, heavy type, with heavy duty certified aluminum rail 70 mm x 80 mm with embedded stainless steel rod & certified stainless steel rollers.

INAL Folding System FN-200 use a heavy duty aluminum hinge at the upper and lower profile. The special design and high quality of hinges ensure functionality, durability and lifetime operation.

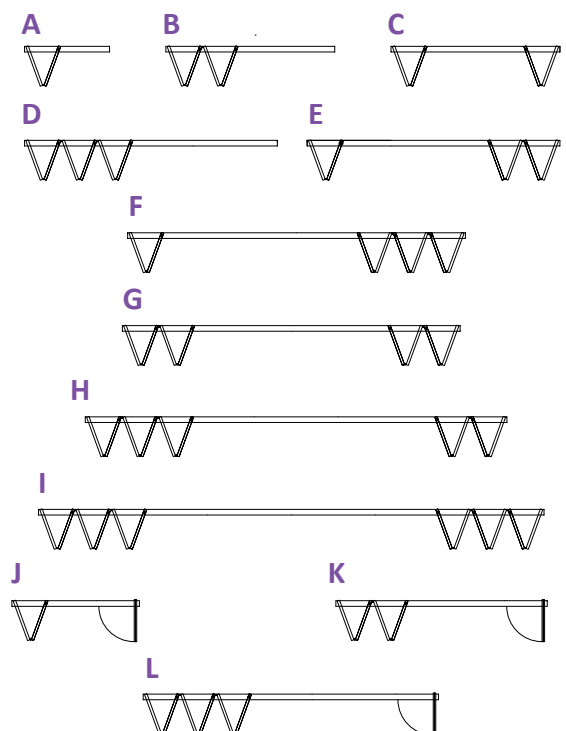
Weather proofing with polycarbonate or PVC profiles between the panels. Locking with Stainless steel front or side bolts or locking with double locking lock mechanism.

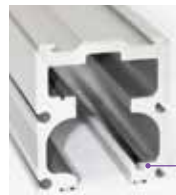
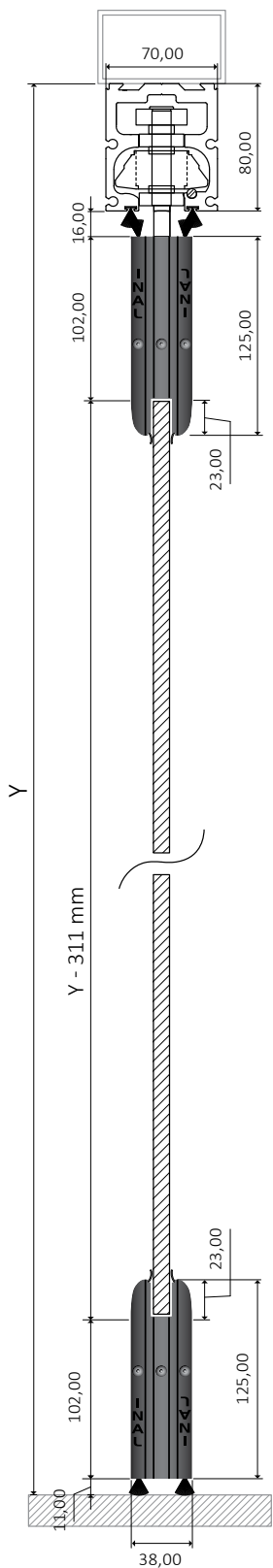
Available in Do It Yourself (DIY) or Made to measure upon request.

## technical specifications

|   |  |
|---|--|
| Glass Type                                      | Tempered or Laminated                                |
| Glass thickness                                 | 10- 12mm   |
| Panel weight                                    | max 90kg   |
| Maximum panel width                             | 1,00m  |
| Maximum opening height                          | 3,50m  |
| Type of FN-200 System                           | Front Locking  |
| Finishing                                       | Natural anodized, Satin anodized, RAL powder coating |
| Without floor guide, No glass cuttings required |  |

### PANEL STORAGE/FOLDING APPLICATIONS





Heavy duty aluminum rail 70x80 with embedded stainless steel rod  
**STRENGTH TEST:** 3.450kgr (165/049.01-1 N.T.U.A.).

INTERMETAL SA PATENT



Stainless steel roller PR200 with clamp support.  
**STRENGTH TEST:** 4.600kgr (165/049.01-2 N.T.U.A.).



Heavy duty hinges between the panels.



Durability and lifetime operation



**NO FLOOR GUIDE  
REQUIRED**

**NO GLASS CUTTINGS  
REQUIRED**

## locking options

### FRONT LOCKING



Lock Mechanism with eurocylinder Key



Lock Mechanism with Half Cylinder and knob



Stainless Bolt

#### GLASS (TEMPERED) DIMENSION CALCULATION

Glass height (mm) =  $Y - 311\text{mm}$ , ( Y = from the bottom of the steel beam)

Opening width (mm) = O.W.      Number of panels (pcs) = P.N.

Glass width (mm) =  $\{O.W. - [(P.N. \times 3\text{mm}) + 20\text{mm}]\} / P.N.$

#### GLASS (LAMINATED) DIMENSION CALCULATION

Glass height (mm) =  $Y - 295\text{mm}$ , ( Y = from the bottom of the steel beam)

Opening width (mm) = O.W.      Number of panels (pcs) = P.N.

Glass width (mm) =  $\{O.W. - [(P.N. \times 3\text{mm}) + 20\text{mm}]\} / P.N.$

# FN-150

## folding glass door

### FOLDING SYSTEM



INAL® Frameless Folding door System, with middle size aluminum rail, 52 mm x 59 mm with embedded stainless steel rod & certified stainless steel rollers.

INAL Folding System FN-150 use a heavy duty aluminum hinge at the upper and lower profile. The special design and high quality of hinges ensure functionality, durability and lifetime operation.

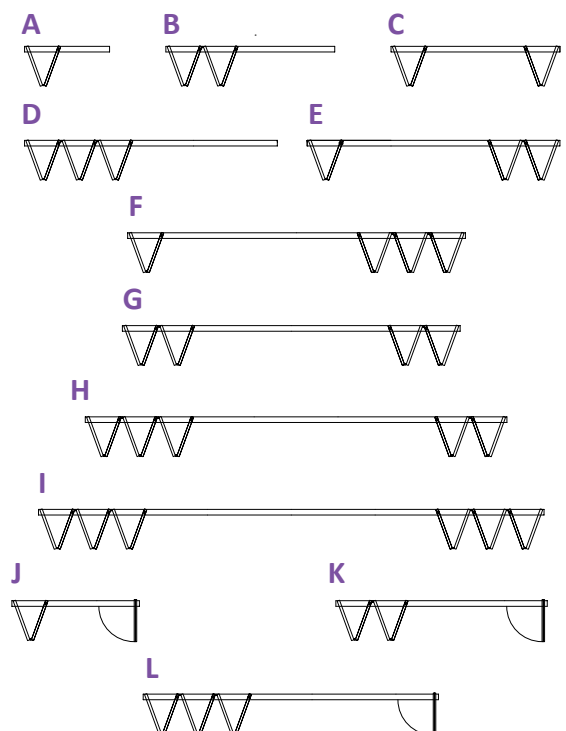
Weather proofing with polycarbonate profiles between the panels. Locking with Stainless steel front bolts in a wide range, also locking with double locking lock mechanism.

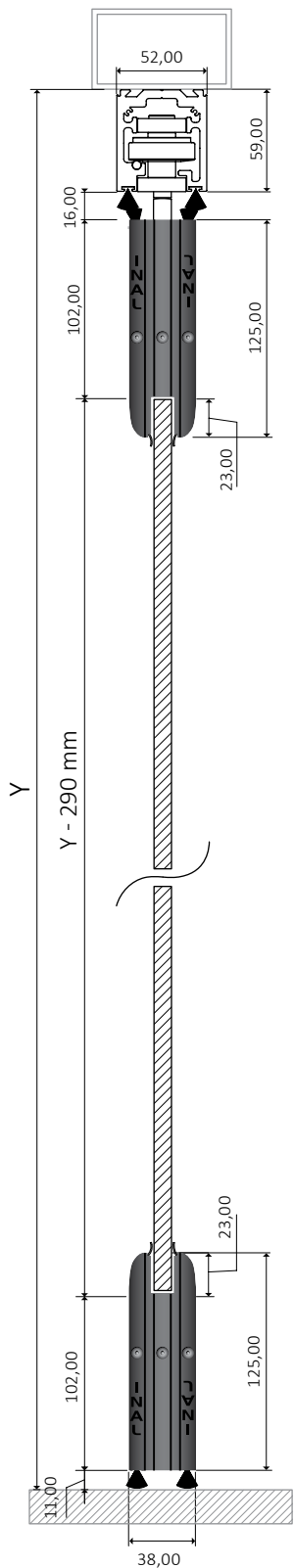
Available in Do It Yourself (DIY) or Made to measure upon request.

## technical specifications

|   |  |
|---|--|
| Glass Type                                      | Tempered or Laminated                                |
| Glass thickness                                 | 10mm   |
| Panel weight                                    | max 85kg   |
| Maximum panel width                             | 1,00m  |
| Maximum opening height                          | 2,80m  |
| Type of FN-150 System                           | Front Locking  |
| Finishing                                       | Natural anodized, Satin anodized, RAL powder coating |
| Without floor guide, No glass cuttings required |  |

### PANEL STORAGE/FOLDING APPLICATIONS





Aluminum middle size rail 52x59 with embedded stainless steel rod.



INTERMETAL SA PATENT



Stainless steel roller PR150 with clamp support.



Heavy duty aluminum hinge at the upper and lower profile.



NO FLOOR GUIDE REQUIRED

NO GLASS CUTTINGS REQUIRED

Weather proofing brush between bottom profile and the floor.



Storage of folding panels.

## locking options

### FRONT LOCKING



Lock Mechanism with eurocylinder Key



Lock Mechanism with Half Cylinder and knob



Stainless Bolt

#### GLASS (TEMPERED) DIMENSION CALCULATION

Glass height (mm) =  $Y - 290\text{mm}$ , ( Y = from the bottom of the steel beam)

Opening width (mm) = O.W.      Number of panels (pcs) = P.N.

Glass width (mm) =  $\{O.W. - [(P.N. \times 3\text{mm}) + 20\text{mm}]\} / P.N.$

#### GLASS (LAMINATED) DIMENSION CALCULATION

Glass height (mm) =  $Y - 274\text{mm}$ , ( Y = from the bottom of the steel beam)

Opening width (mm) = O.W.      Number of panels (pcs) = P.N.

Glass width (mm) =  $\{O.W. - [(P.N. \times 3\text{mm}) + 20\text{mm}]\} / P.N.$

# FN-M200

## folding glass door with heavy duty rail

### FOLDING SYSTEM



INAL® Frameless Folding door System, heavy type, with heavy duty certified aluminum rail 70 mm x 80 mm with embedded stainless steel rod & certified stainless steel rollers.

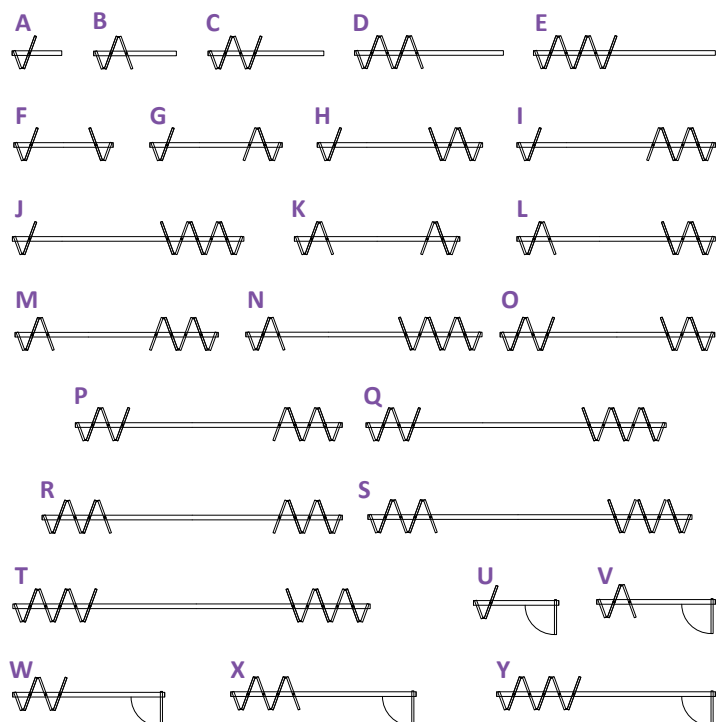
INAL Folding System FN-M200 use a heavy duty aluminum hinge at the upper and lower profile. The special design and high quality of hinges ensure functionality, durability and lifetime operation. Weather proofing with polycarbonate or PVC profiles between the panels. Locking with Stainless steel front or side bolts or locking with double locking lock mechanism.

Available in Do It Yourself (DIY) or Made to measure upon request.

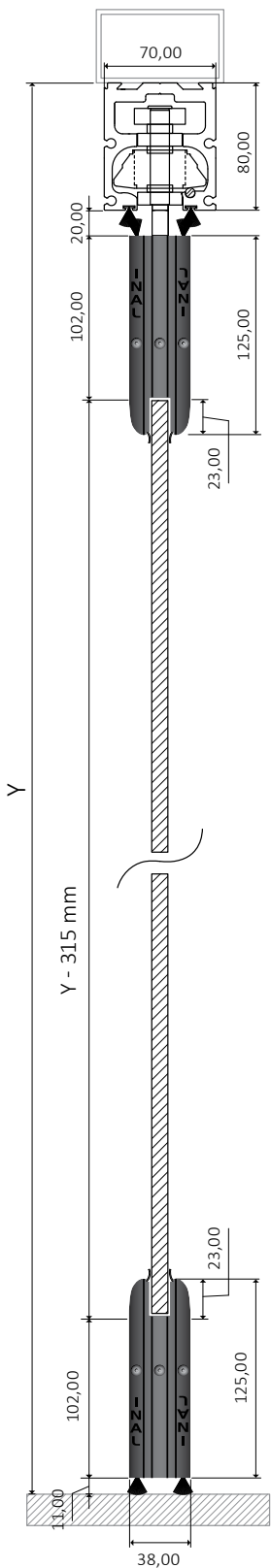
## technical specifications

|   |  |
|---|--|
| Glass Type                                      | Tempered or Laminated                                |
| Glass thickness                                 | 10- 12mm   |
| Panel weight                                    | max 90kg   |
| Maximum panel width                             | 1,00m  |
| Maximum opening height                          | 3,50m  |
| Type of FN-M200 System                          | Front Locking  |
| Finishing                                       | Natural anodized, Satin anodized, RAL powder coating |
| Without floor guide, No glass cuttings required |  |

### PANEL STORAGE/FOLDING APPLICATIONS







Heavy duty aluminum rail 70x80 with embedded stainless steel rod  
**STRENGTH TEST:** 3.450kg (165/049.01-1 N.T.U.A.).

INTERMETAL SA PATENT



Stainless steel roller PR200 with clamp support. **STRENGTH TEST:** 4.600kg (165/049.01-2 N.T.U.A.).



Heavy duty hinges between the panels.



Durability and lifetime operation

\* Middle folding option is also available in FN-M150 and FN-M100 models

## locking options

### FRONT LOCKING



Lock Mechanism with eurocylinder Key



Lock Mechanism with Half Cylinder and knob



Stainless Bolt



NO FLOOR GUIDE REQUIRED

NO GLASS CUTTINGS REQUIRED

#### GLASS (TEMPERED) DIMENSION CALCULATION

Glass height (mm) =  $Y - 315\text{mm}$ , ( Y = from the bottom of the steel beam)

Opening width (mm) = O.W.      Number of panels (without the half panel)(pcs) = P.N.

1st (half panel) glass width (mm) = G.W. 1      Glass width (rest panels) (mm) = G.W. N

$G.W.N. = \{O.W. - [(P.N. + 1) \times 3\text{mm}] + 83\text{mm}\} : (P.N. + 0,5)$

$G.W. 1 = (G.W.N. : 2) + 51\text{mm}$

#### GLASS (LAMINATED) DIMENSION CALCULATION

Glass height (mm) =  $Y - 300\text{mm}$ , ( Y = from the bottom of the steel beam)

Opening width (mm) = O.W.      Number of panels (without the half panel)(pcs) = P.N.

1st (half panel) glass width (mm) = G.W. 1      Glass width (rest panels) (mm) = G.W. N

$G.W.N. = \{O.W. - [(P.N. + 1) \times 3\text{mm}] + 83\text{mm}\} : (P.N. + 0,5)$

$G.W. 1 = (G.W.N. : 2) + 51\text{mm}$

# PANORAMA

## folding glass door

### FOLDING SYSTEM



INAL® Folding door System with heavy duty certified aluminum top rail 70 mm x 80 mm with embedded stainless steel rod & certified stainless steel rollers and floor guide.

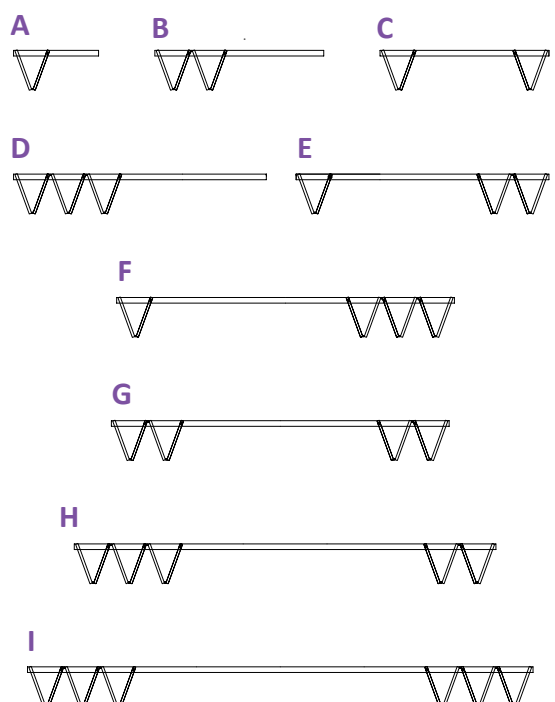
PANORAMA Folding System is suitable for internal spaces with the use of special design aluminum upper and lower hinges, without profiles. Weather proofing with polycarbonate or PVC profiles between the panels. Locking with Stainless steel front bolt in the bottom hinges.

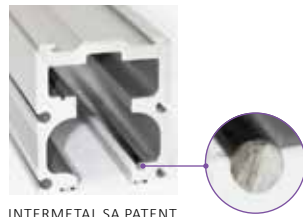
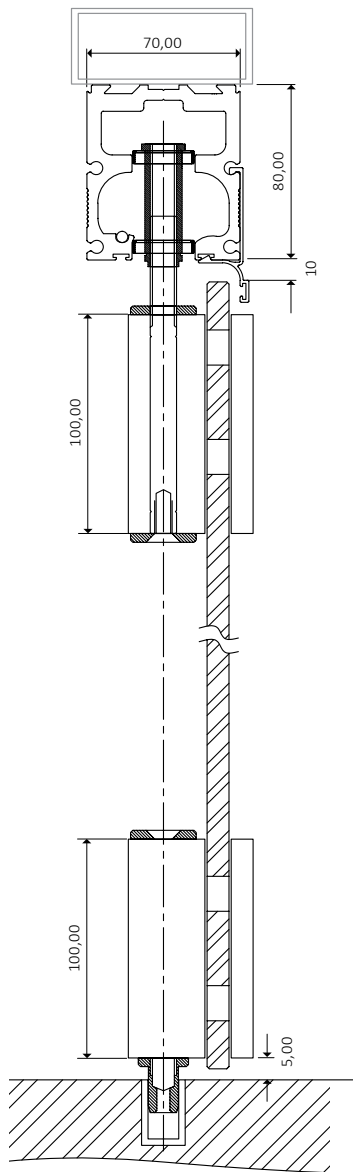
Available in Do It Yourself (DIY) or Made to measure upon request.

## technical specifications

|  |  |
|--|--|
| Glass Type                                       | Tempered   |
| Glass thickness                                  | 8- 10 - 12mm   |
| Panel weight                                     | max 70kg   |
| Maximum panel width                              | 1,00m  |
| Maximum opening height                           | 2,70m  |
| Type of PANORAMA System                          | Front Locking  |
| Type of locking                                  | Stainless bolt                                       |
| Finishing  | Natural anodized, Satin anodized, RAL Powder coating |
| <b>With floor guide, Glass cuttings required</b> |  |

### PANEL STORAGE/FOLDING APPLICATIONS





INTERMETAL SA PATENT

Heavy duty aluminum rail 70x80 with embedded stainless steel rod  
**STRENGTH TEST:**  
 3.450kg  
 (165/049.01-1 N.T.U.A.).

## system hinges



Upper single hinge with roller  
 CODE **501MR**



Upper double hinge with roller  
 CODE **501DR**



Upper double hinge  
 CODE **501D**



Lower double hinge with pin  
 CODE **502DP**



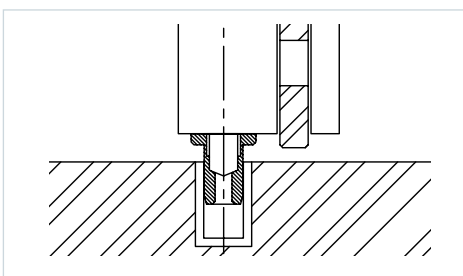
Lower double hinge with bolt  
 CODE **502DS**



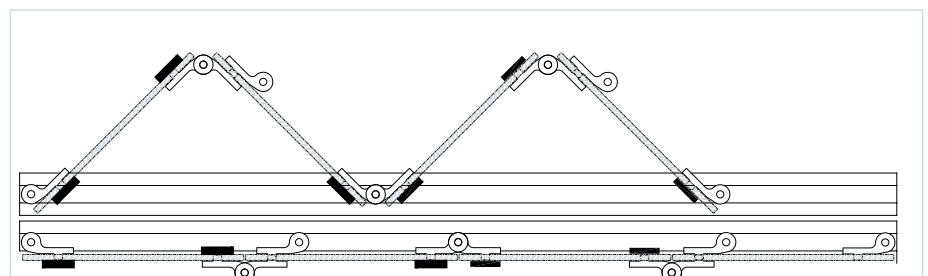
Lower single hinge with pin  
 CODE **502MP**

**With floor guide**  
**Glass cuttings required**

## floor guide



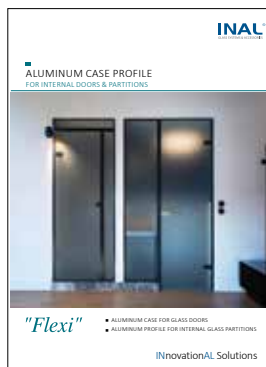
## upper view



# FLEXIBLE GLASS DOORS



## ALSO DOWNLOAD OUR PRODUCT CATALOGUES



# INnovationAL Solutions