

folding glass door

FOLDING SYSTEM



INAL® Frameless Folding door System, with upper and lower aluminum profile 70 mm. Aluminum middle size rail 52 mm x 59 mm with embedded stainless steel rod & stainless steel rollers.

INAL® Folding System FN-100 use aluminum hinge at the upper and lower profile. The special design and high quality of hinges ensure functionality, durability and lifetime operation. Weather proofing along the entire length of the panel.

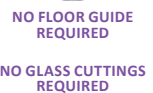
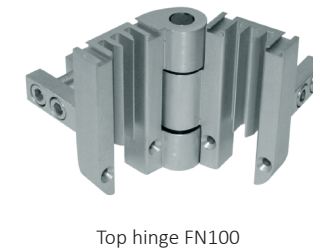
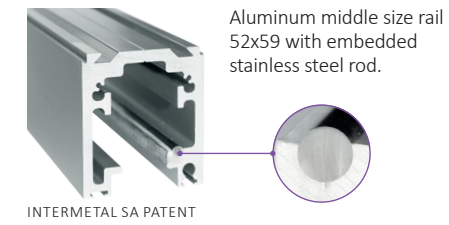
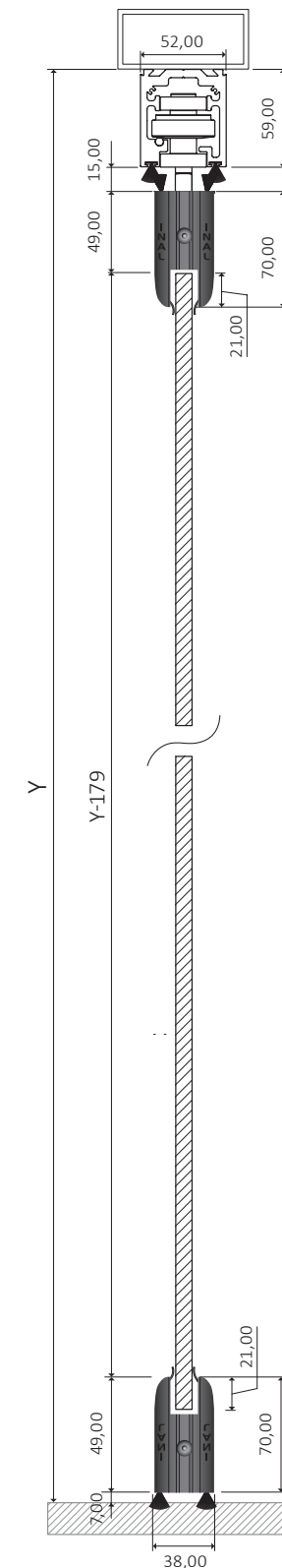
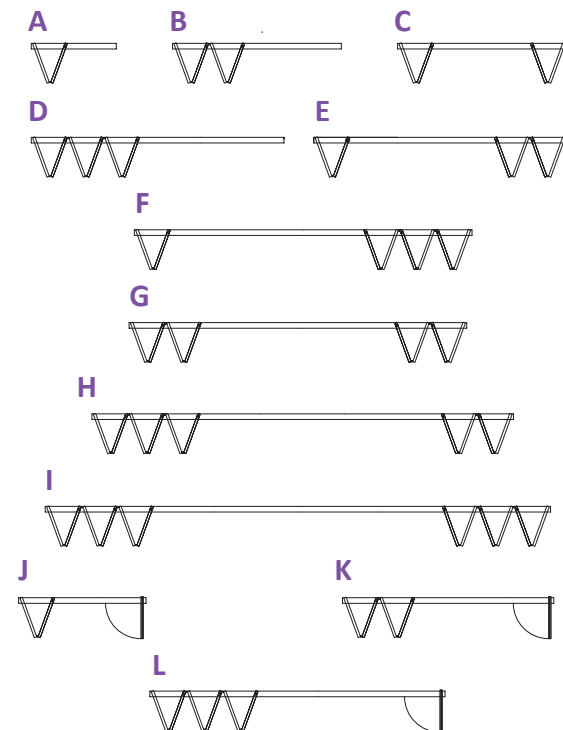
Locking with Stainless steel front bolts in the bottom hinges.

Available in Do It Yourself (DIY) or Made to measure upon request.

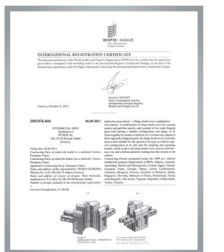
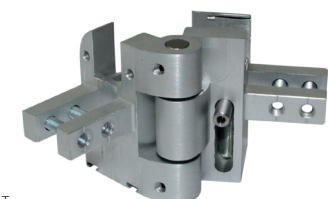
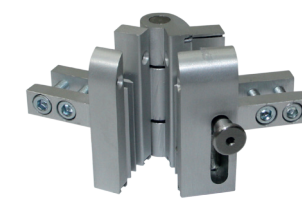
technical specifications

Glass Type	Tempered or Laminated
Glass thickness	10 mm
Panel weight	max 55kg
Maximum panel width	0,80m
Maximum opening height	2,70m
Type of FN-100 System	Front Locking
Finishing	Natural anodized, Satin anodized, RAL powder coating
Without floor guide, No glass cuttings required	

PANEL STORAGE/FOLDING APPLICATIONS



locking options
FRONT LOCKING



GLASS (TEMPERED & LAMINATED) DIMENSION CALCULATION

Glass height (mm) = Y - 179mm, (Y = from the bottom of the steel beam)	
Opening width (mm) = O.W.	Number of panels (pcs) = P.N.
Glass width (mm) = {O.W. - [(P.N. x 3mm) + 24mm]} / P.N.	

